

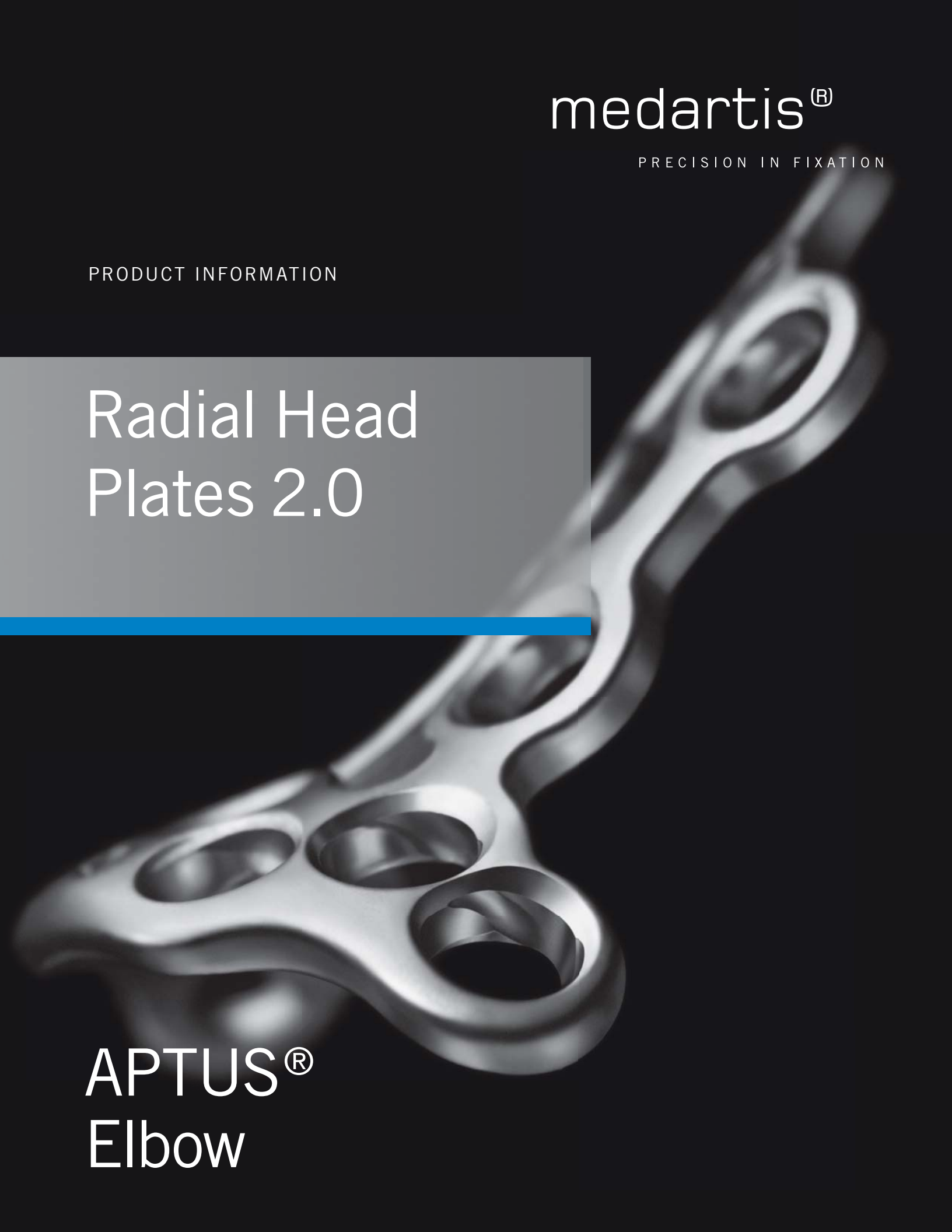
medartis®

PRECISION IN FIXATION

PRODUCT INFORMATION

Radial Head Plates 2.0

APTUS®
Elbow

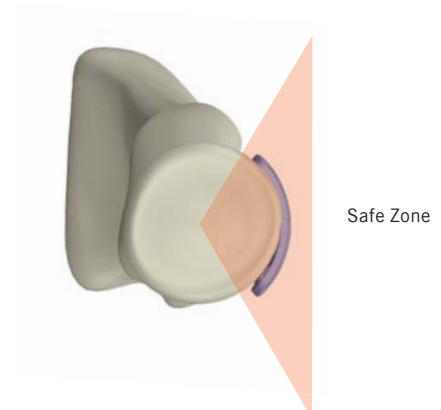


Radial Head Plates 2.0

Safe and stable internal fixation of complex radial head fractures with anatomic angular stable plates

Plate Features

- Minimal plate thickness
- Chamfered plate contour to minimize soft tissue irritation
- Anatomic plate design
- TriLock – multidirectional ($\pm 15^\circ$) and angular stable screw locking is possible in each plate hole
- All plate holes can be utilized with either locking or non-locking screws
- Consistent screw size ($\varnothing 2.0$ mm)
- Titanium Grade 4 for optimal stability
- Holes for supplemental 1.2 mm K-wire fixation



Clinical Benefits

Anatomic design to minimize soft tissue irritation and ensure stable fixation

- Anatomically optimized plate designs
- Fixation of multiple fragments
- Low plate profile minimizes soft tissue irritation, particularly in the case of the annular ligament



Radial Head Rim Plate
For the stabilization of complex comminuted fractures

Multiple locking options

- Multidirectional and angular stable TriLock technology provides a variable cone of $\pm 15^\circ$ for optimal fixation of all fragments
- Angular stability of screw fixation minimizes risk of post-operative loss of reduction
- Screw configuration can be adapted to the fracture pattern due to numerous plate holes



Radial Head Buttress Plate
For an optimal sparing of the annular ligament

Clinical Cases

Case 1



Radial Head Rim Plate for a Mason Typ III / IV head fracture

Case 2



Radial Head Buttress Plate for a Mason Type III neck fracture

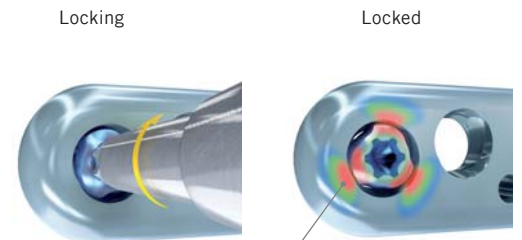


Technology, Biomechanics, Screw Features

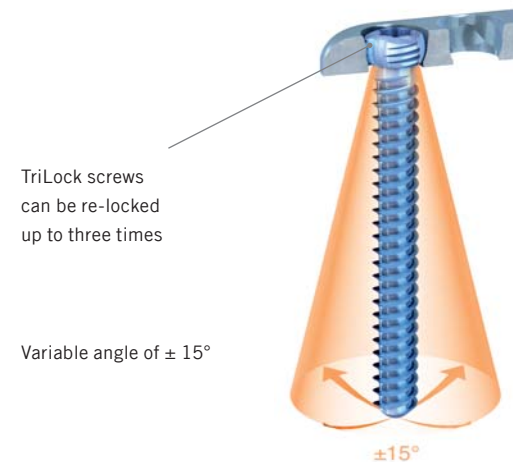
Multidirectional and angular stable
TriLock locking technology

Technology

- Multidirectional ($\pm 15^\circ$) and angular stable TriLock locking system
 - Spherical three-point wedge-locking
 - Friction locking through radial bracing of the screw head in the plate – without additional tensioning components
- TriLock screws can be re-locked in the same plate hole under individual angles up to three times
- Minimal screw head protrusion thanks to internal locking contour
- No cold welding between plate and screws
- Intra-operative fine tuning capabilities



Secure locking of the TriLock screw

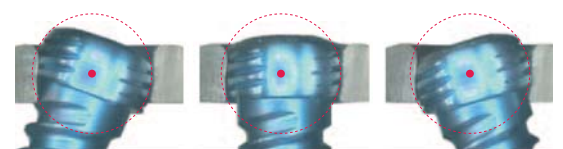


TriLock screws can be re-locked up to three times

Variable angle of $\pm 15^\circ$

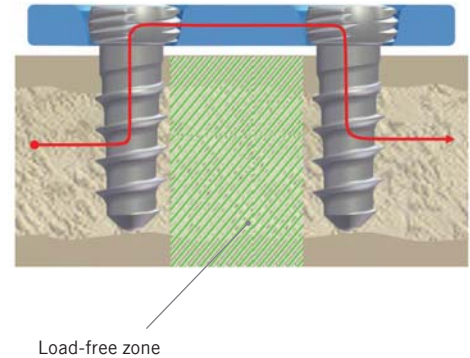
$\pm 15^\circ$

Minimal screw head protrusion



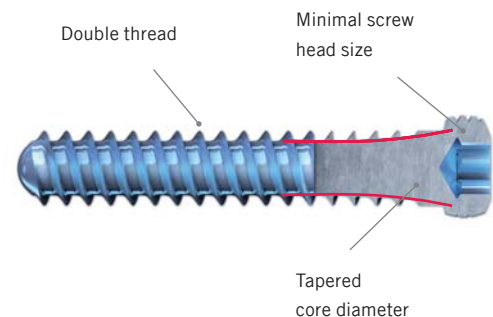
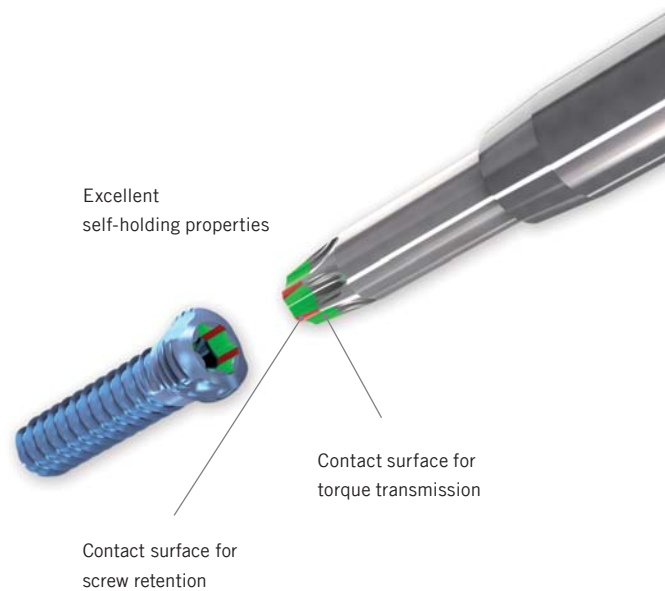
Biomechanics

- Internal fixator principle
 - Forces around the proximal radius bypass the generally unstable fracture site
 - Low contact for ideal blood supply
 - Functionally dynamic construct to avoid cut-out of screws



Screw Features

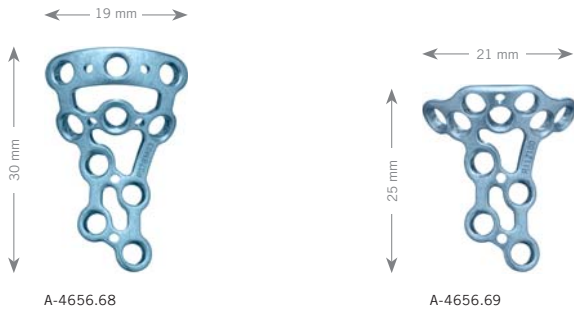
- HexaDrive screw head design
 - Secure connection between screw and screwdriver
 - Increased torque transmission
 - Optimal self-retaining mechanism
- Maximum soft tissue protection due to chamfered shape of the screw head without sharp edges
- Atraumatic tip prevents soft tissue irritation when inserting screws bicortically
- Tapered core diameter for increased torsional and tensile strength
- Precision cut thread profile for improved sharpness and self-tapping properties
- Double threaded for faster insertion of TriLock screws
- TiAl6V4 for improved strength



Ordering Information

2.0 TriLock Radial Head Plates

Material: Titanium (ASTM F67)
Plate thickness: 1.4 mm



Art. No.	Description	Holes	Pieces per Pack
A-4656.68	rim plate	10	1
A-4656.69	buttress plate	11	1

K-Wires, Stainless Steel



Art. No.	System Size	Description	Length	Pieces per Pack
A-5040.21	1.2	trocar	150 mm	10
A-5042.21	1.2	lancet	150 mm	10

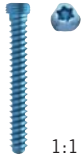
K-Wire Dispenser



Art. No.	System Size	Length	Pieces per Pack
A-6010.12	1.2	185 mm	1

2.0 TriLock Screws, HexaDrive 6

Material: Titanium (ASTM F136)



Length	Art. No.	Pieces per Pack	Art. No.	Pieces per Pack
6 mm	A-5450.06/1	1	A-5450.06	5
8 mm	A-5450.08/1	1	A-5450.08	5
10 mm	A-5450.10/1	1	A-5450.10	5
12 mm	A-5450.12/1	1	A-5450.12	5
14 mm	A-5450.14/1	1	A-5450.14	5
16 mm	A-5450.16/1	1	A-5450.16	5
18 mm	A-5450.18/1	1	A-5450.18	5
20 mm	A-5450.20/1	1	A-5450.20	5
22 mm	A-5450.22/1	1	A-5450.22	5
24 mm	A-5450.24/1	1	A-5450.24	5
26 mm	A-5450.26/1	1	A-5450.26	5
28 mm	A-5450.28/1	1	A-5450.28	5
30 mm	A-5450.30/1	1	A-5450.30	5

2.0 Cortical Screws, HexaDrive 6

Material: Titanium (ASTM F136)



Length	Art. No.	Pieces per Pack	Art. No.	Pieces per Pack
6 mm	A-5400.06/1	1	A-5400.06	5
8 mm	A-5400.08/1	1	A-5400.08	5
10 mm	A-5400.10/1	1	A-5400.10	5
12 mm	A-5400.12/1	1	A-5400.12	5
14 mm	A-5400.14/1	1	A-5400.14	5
16 mm	A-5400.16/1	1	A-5400.16	5
18 mm	A-5400.18/1	1	A-5400.18	5
20 mm	A-5400.20/1	1	A-5400.20	5
22 mm	A-5400.22/1	1	A-5400.22	5
24 mm	A-5400.24/1	1	A-5400.24	5
26 mm	A-5400.26/1	1	A-5400.26	5
28 mm	A-5400.28/1	1	A-5400.28	5
30 mm	A-5400.30/1	1	A-5400.30	5

2.3 Cortical Screws, HexaDrive 6

Material: Titanium (ASTM F136)



Length	Art. No.	Pieces per Pack	Art. No.	Pieces per Pack
8 mm	A-5500.08/1	1	A-5500.08	5
10 mm	A-5500.10/1	1	A-5500.10	5
12 mm	A-5500.12/1	1	A-5500.12	5
14 mm	A-5500.14/1	1	A-5500.14	5
16 mm	A-5500.16/1	1	A-5500.16	5

Twist Drills Ø 1.6 mm



A-3414



A-3424



A-3434

Art. No.	System Size	Stop	Length	Drill Shaft End	Pieces per Pack
A-3414	2.0	30 mm	92 mm	Dental	1
A-3424	2.0	30 mm	92 mm	Stryker J-Latch	1
A-3434	2.0	30 mm	86 mm	AO Quick Coupling	1

Twist Drills Ø 2.1 mm (for gliding holes)



A-3411



A-3421



A-3431

Art. No.	System Size	Stop	Length	Drill Shaft End	Pieces per Pack
A-3411	2.0	10 mm	72 mm	Dental	1
A-3421	2.0	10 mm	72 mm	Stryker J-Latch	1
A-3431	2.0	10 mm	66 mm	AO Quick Coupling	1

Countersink for Cortical Screws



Art. No.	System Size	Ø	Length	Shaft End	Pieces per Pack
A-3610	2.0/2.3	3.5 mm	37 mm	Dental	1

Handle with Quick Connector



Art. No.	Length	Shaft End	Pieces per Pack
A-2071	107 mm	Dental	1

Drill Guide



Art. No.	System Size	Description	Length	Pieces per Pack
A-2020	1.2 - 2.3	centric, excentric	149 mm	1

Depth Gauge



Art. No.	System Size	Length	Pieces per Pack
A-2032	2.0 / 2.3	151 mm	1

Screwdriver, self-holding



Art. No.	System Size	Interface	Length	Pieces per Pack
A-2610	2.0 / 2.3	HD6	153 mm	1

Plate Bending Pliers



Art. No.	System Size	Description	Length	Pieces per Pack
A-2040	1.2 - 2.3	with Vario pin	119 mm	1

Instrument Trays



A-6020



A-6025

Art. No.	Description	Pieces per Pack
A-6020	with silicon inlay	1
A-6025	for A-6020	1

Lid for Instrument Tray



Art. No.	Description	Pieces per Pack
M-6198	for A-6020	1

ELBOW-01000006_v2 / © 02.2011, Medartis AG, Switzerland. All technical data subject to alteration.

HEADQUARTERS

Medartis AG | Hochbergerstrasse 60E | 4057 Basel/Switzerland
P +41 61 633 34 34 | F +41 61 633 34 00 | www.medartis.com

SUBSIDIARIES

Australia | Austria | France | Germany | Mexico | New Zealand | Poland | UK | USA

For detailed information regarding our subsidiaries and distributors, please visit www.medartis.com.