

medartis®

PRECISION IN FIXATION

PRODUCT INFORMATION

TriLock 1.5 Implants for the Phalanges

APTUS®
Hand



TriLock 1.5

The Smallest Locking System

Small, slender, strong

Low profile and angular stable 1.5 TriLock hand plates and screws are a new addition to the APTUS Hand fixation system, expanding possible treatment options 1.5 TriLock implants set a new standard in the angular stable fracture fixation of the hand. Design and configuration of plates and screws have been optimized for the complex anatomy of the phalanges. 1.5 TriLock implants provide an increased support in comminuted and intra-articular fractures and fractures close to the joint, as well as improved stability in osteoporotic bone and arthrodeses.

Clinical Benefits and Features

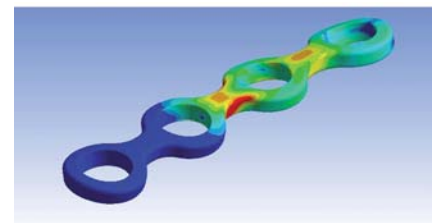
Optimized Plate Geometry

- 0.8 mm low profile plates
- Double bar on all straight plates for an increase of torsional stability by 20%
- Offset screw holes
 - o to avoid screw collisions
 - o to increase rotational stability
- Variable angled locking ($\pm 15^\circ$) in each plate hole

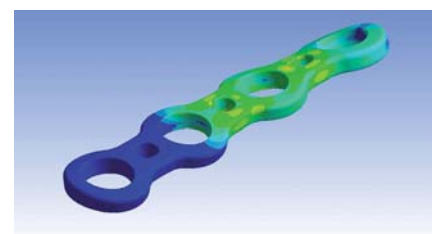
Maximum Soft Tissue Protection

- Highly polished surface and rounded edges to reduce soft tissue irritation and adhesion
- Low overall profile

Stress distribution with torsional load; yellow-red coloring = increased stress



Conventional bar design



New bar design



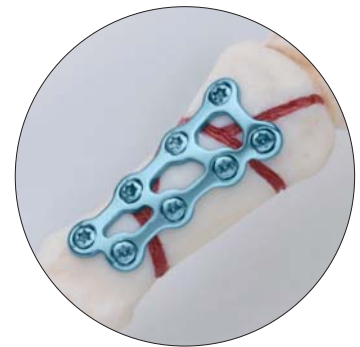
Highly polished surface left, conventional surface right

- Internal fixator for the phalanges
- Multidirectional ($\pm 15^\circ$) and angular stable
- Highly polished surface and rounded edges

Special Plate Designs

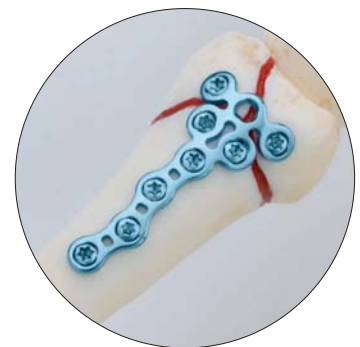
Grid Plates

- High rotational stability, especially for comminuted fractures
- Straight hole arrangement on one end of the plate to position the plate as close to the joint as possible
- Offset hole arrangement to reduce the risk of screw collisions



Double Row T-Plate

- For optimal reconstruction of articular fracture fragments and fractures close to the joint
- Ideal subchondral support of the articular surface
- Offset screw holes in the plate shaft



Rotation Correction Plate

- The oblong hole is close to the joint to perform the osteotomy close to the meta-physeal area
- Offset screw holes in the plate shaft

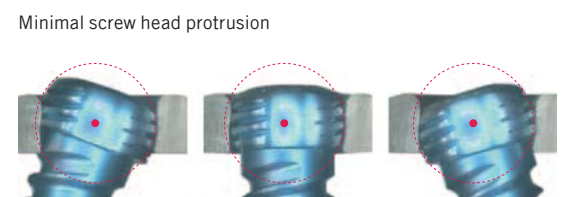
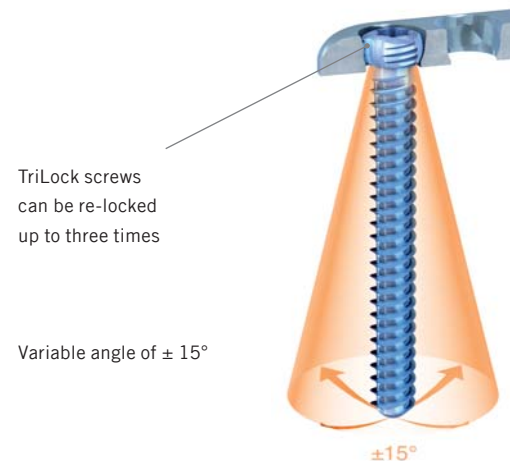
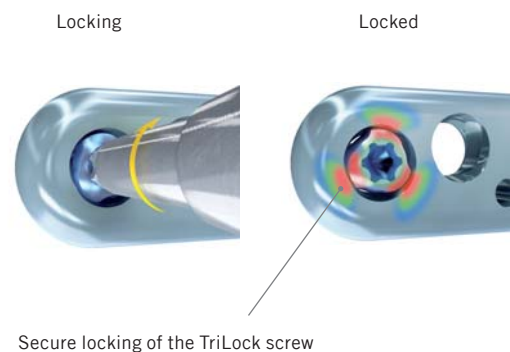


Technology, Screw Features

Multidirectional and angular stable TriLock locking technology

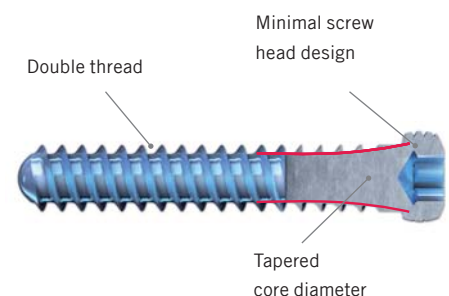
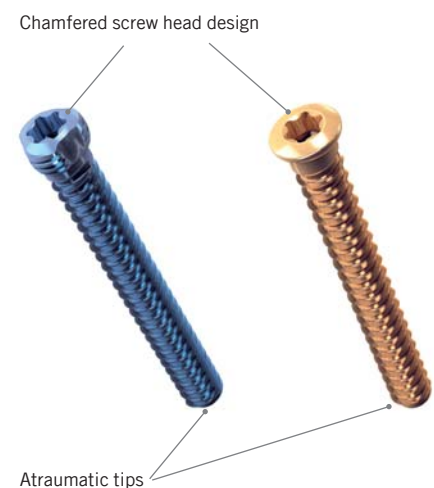
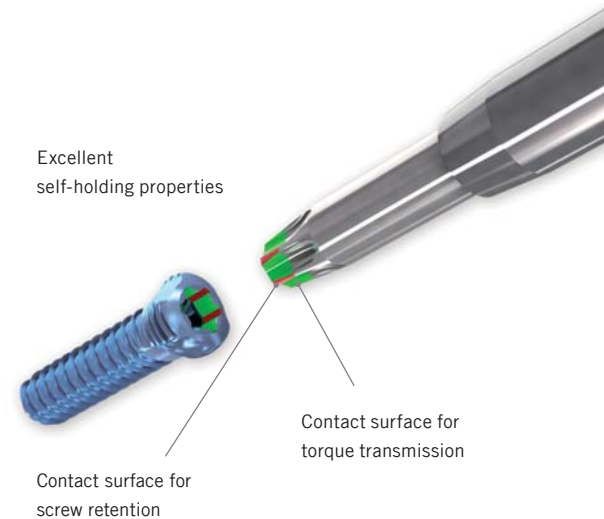
Technology

- Secure, angular stable locking of the screw in the plate
 - Spherical three-point wedge-locking
 - Friction locking through radial bracing of the screw head in the plate – without additional tensioning components
- Screws can pivot freely by $\pm 15^\circ$ in all directions for optimal positioning
- Intra-operative fine adjustable
- TriLock screws can be re-locked in the same plate hole under individual angles up to three times
- Minimal screw head protrusion thanks to submerged locking contour
- No cold welding between plate and screws



Screw Features

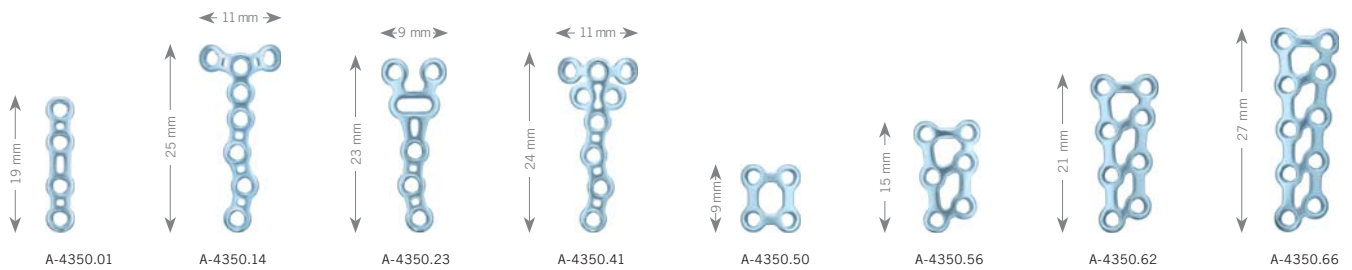
- HexaDrive screw head design
 - Secure connection between screw and screwdriver
 - Increased torque transmission
 - Optimal self-retaining mechanism
- Maximum soft tissue protection due to chamfered shape of the screw head without sharp edges
- Atraumatic tip prevents soft tissue irritation when inserting screws bicortically
- Tapered core diameter for increased torsional and tensile strength
- Precision cut thread profile for improved sharpness and self-tapping properties
- Double threaded for faster insertion of TriLock screws
- TiAl6V4 for improved strength
- Each plate hole can be used with 1.2/1.5 cortical (fixation) or 1.5 TriLock screws.



Ordering Information

1.5 TriLock Plates

Material: Titanium (ASTM F67)
 Plate thickness: 0.8 mm



| Art. No. | Description | Holes | Piece per Pack |
|-----------|-------------------|----------|----------------|
| A-4350.01 | straight | 4 | 1 |
| A-4350.14 | T | 8 (3/5) | 1 |
| A-4350.23 | rotation | 6 (3/3) | 1 |
| A-4350.41 | double row, T | 9 (5/4) | 1 |
| A-4350.50 | Grid, rectangular | 4 (2x2) | 1 |
| A-4350.56 | Grid, trapezoid | 6 (3x2) | 1 |
| A-4350.62 | Grid, trapezoid | 8 (4x2) | 1 |
| A-4350.66 | Grid, trapezoid | 10 (5x2) | 1 |

1.5 TriLock Screws, HexaDrive 4

Material: Titanium (ASTM F136)



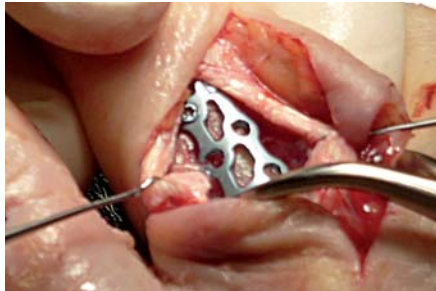
| Length | Art. No | Piece per Pack | Art. No. | Piece per Pack |
|--------|-------------|----------------|-----------|----------------|
| 4 mm | A-5250.04/1 | 1 | A-5250.04 | 5 |
| 5 mm | A-5250.05/1 | 1 | A-5250.05 | 5 |
| 6 mm | A-5250.06/1 | 1 | A-5250.06 | 5 |
| 7 mm | A-5250.07/1 | 1 | A-5250.07 | 5 |
| 8 mm | A-5250.08/1 | 1 | A-5250.08 | 5 |
| 9 mm | A-5250.09/1 | 1 | A-5250.09 | 5 |
| 10 mm | A-5250.10/1 | 1 | A-5250.10 | 5 |
| 11 mm | A-5250.11/1 | 1 | A-5250.11 | 5 |
| 12 mm | A-5250.12/1 | 1 | A-5250.12 | 5 |
| 13 mm | A-5250.13/1 | 1 | A-5250.13 | 5 |

Clinical Cases

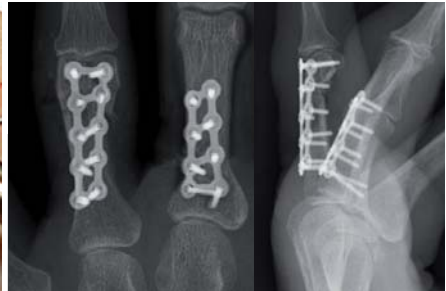
Case 1 - Fracture of the Proximal Phalanges III and IV



Preoperative x-rays
72 year old woman, 4 weeks after fall from a ladder with temporary k-wire fixation.



Osteosynthesis with two grid plates.

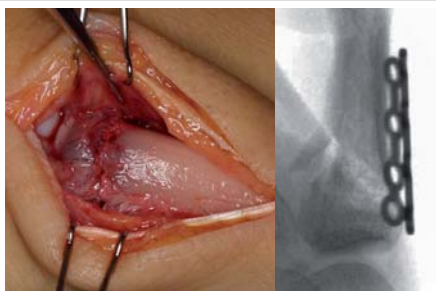


Postoperative x-rays

Case 2 - Fracture of the Proximal Phalanx V



Preoperative x-rays
48 year old man after bicycle accident.



Left: Intraoperative view of the comminuted fracture zone.

Right: Intraoperative x-ray of the instable fracture site.



Postoperative x-rays

HAND-01000001_v0 / © 09.2010, Medartis AG, Switzerland. All technical data subject to alteration.

| | |
|--------------------------------------|--|
| HEADQUARTERS/ SWITZERLAND | Medartis AG Hochbergerstrasse 60E 4057 Basel/Switzerland P +41 61 633 34 34 F +41 61 633 34 00 www.medartis.com |
| AUSTRALIA | Medartis Australia & New Zealand Pty Ltd Unit 6, 10 Hudson Road PO Box 111 Albion Qld 4010, Australia P 1300 858 853 P ^{int} +61 7 3326 8700 F 1300 854 665 F ^{int} +61 7 3862 2665 |
| AUSTRIA | Medartis GmbH Twin Tower Wienerbergstrasse 11/12a A-1100 Wien P +43 1 99460 6499 F +43 1 99460 6498 |
| FRANCE | Medartis S.A.R.L. Domaine d'Entreprises 29, rue Condorcet F-38090 Vaulx Milieu P +33 474 99 94 14 F +33 474 99 00 19 |
| GERMANY | Medartis GmbH Am Gansacker 10 D-79224 Umkirch P +49 7665 98 24 0 F +49 7665 98 24 10 |
| MEXICO | Medartis S.A. de C.V. Av. Presidente Masaryk 111 Piso 1 Col. Chapultepec Morales Del. Miguel Hidalgo MEX-11560, México, D.F. P (+52 55) 3300 6054 F (+52 55) 3300 6006 |
| NEW ZEALAND | Medartis New Zealand Ltd PO Box 28461 Remuera Auckland, 1541 New Zealand P 0800 548 001 P ^{int} +64 9 909 0416 F 0800 548 002 F ^{int} +64 9 909 0419 |
| POLAND | Medartis Sp. z o.o ul. Sokolnicza 5/29 PL-53676 Wrocław P +48 71 359 56 18 F +48 71 359 56 15 |
| UNITED KINGDOM | Medartis Ltd. Batley Business Park Suite 63, Annexe 4 Technology Drive, Batley West Yorkshire, WF17 6ER United Kingdom P +44 (0)1924 476699 F +44 (0)1924 472000 |
| USA | Medartis Inc. 127 W. Street Rd, Suite 203 Kennett Square, PA 19348 USA P +1 610 961 6101 Toll free 877 406 BONE (2663) F +1 610 961 6108 |