

medartis®

PRECISION IN FIXATION

PRODUCT INFORMATION

Extension
Arthrodesis System
2.5



APTUS®
Wrist

Bibliography

Wei, D.H. and Feldon, P.
Total Wrist Arthrodesis: Indications and Clinical Outcomes
J Am Acad Orthop Surg, 2017.
25(1): p. 3–11.

McGuire, D.T. and Bain, G.I.
Radioscapholunate fusion
J Wrist Surg, 2012.
1(2): p. 135–40.

Koehler, S., et al.
Wrist arthrodesis with a fixed-angle, “low-profile” fusion plate without carpometacarpal joint fixation
Oper Orthop Traumatol, 2017.
29(5): p. 416–430. German.

Quadlbauer, S., et al.
Volar Radioscapholunate Arthrodesis and Distal Scaphoidectomy After Malunited Distal Radius Fractures
J Hand Surg Am, 2017.
42(9): p. 754.e1–754.e8.

Rancy, S.K., et al.
Nonspanning Total Wrist Arthrodesis with a Low-Profile Locking Plate
J Wrist Surg, 2018.
7(2): p. 127–132.

Krimmer, H.
Teil- und Totalarthrodesen am Handgelenk.
2014, Springer Berlin Heidelberg.

Passin, S., et al.
Biomechanical Testing of a New Total Wrist Arthrodesis Plate
2015, Stuttgart, New York: Thieme.

Contents

4	2.5 TriLock RSL Fusion Plates
6	2.5 TriLock Wrist Fusion Plates, Radiocapitate
8	2.5 TriLock Total Wrist Fusion Plates
10	Ordering Information

For further information regarding the APTUS product line visit:
www.medartis.com

2.5 TriLock RSL Fusion Plates

Radiocarpal arthrodesis from volar

Clinical Benefits

- Volar plates for fusion of radius, scaphoid and lunate (RSL)
- Physiological motion in the midcarpal joint is maintained
- Anatomical plate designs for simple intraoperative use
- Two screws can be inserted in each carpal bone
- Double shaft design provides high rotational stability
- Low plate profile of 1.6 mm

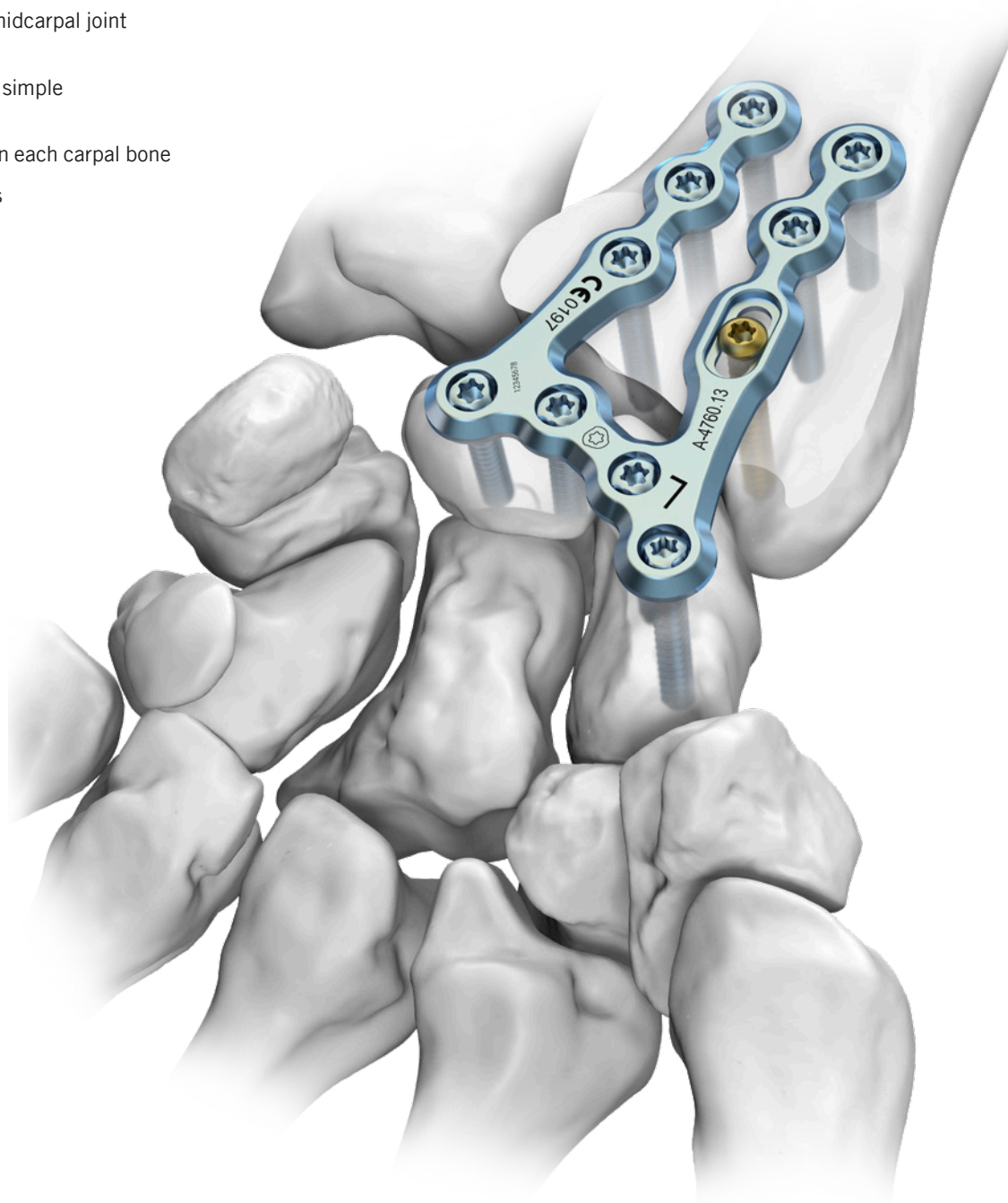
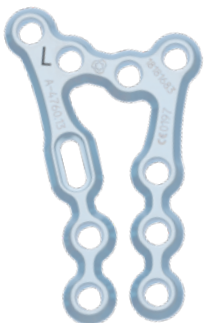


Plate Features

- TriLock – multidirectional angular stability of $\pm 15^\circ$ in all directions and in each screw hole*
- Minimal screw head protrusion thanks to internal locking contour
- Consistent screw diameter of 2.5 mm for intraoperative simplicity
- Oblong hole for variable plate positioning and to facilitate axial compression
- Rounded edges and a smooth surface for soft tissue protection
- Plates are compatible with the screws and instruments of the APTUS Wrist Radius System 2.5

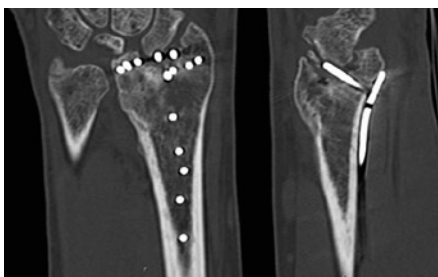


A-4760.13

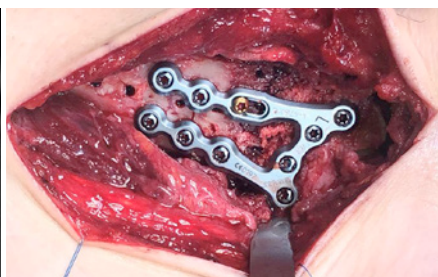


A-4760.14

Scale 1:1



Failed volar fixation with intraarticular screw position, pronounced joint displacement and SL gap widening



Radiocarpal partial arthrodesis with the volar RSL Fusion plate



Postoperative X-rays with precise positioning of the lunate and removed distal pole of the scaphoid

* Exception: oblong hole

2.5 TriLock Wrist Fusion Plates

Radiocapitate wrist arthrodesis

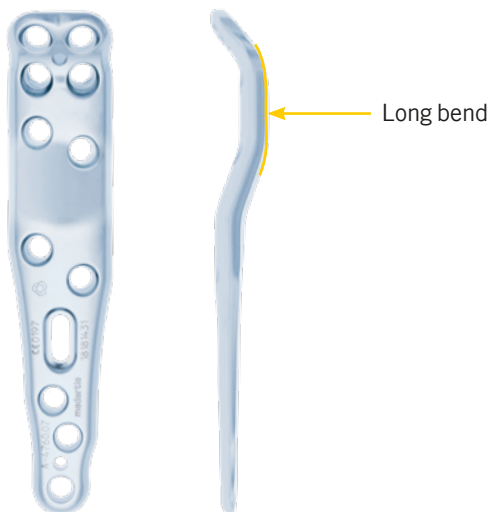
Clinical Benefits

- Fusion of the intermediate column – especially following proximal row carpectomy – without arthrodesis of the carpometacarpal joint
- Physiological motion in the carpometacarpal joint is maintained
- Plate with long bend, for example for medium to large wrists
- Plate with short bend, for example for small wrists

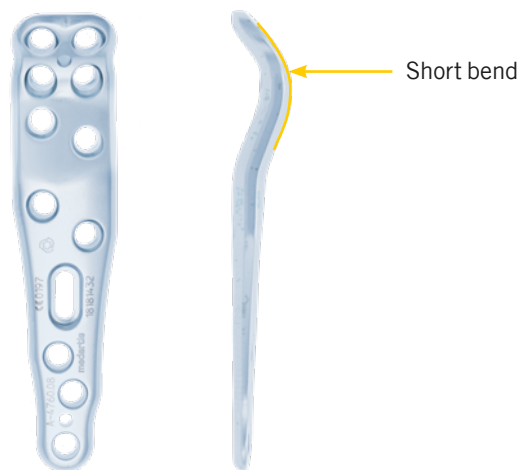


Plate Features

- TriLock – multidirectional angular stability of $\pm 15^\circ$ in all directions and in each screw hole*
- Consistent screw diameter of 2.5 mm for intraoperative simplicity
- Oblong hole for variable plate positioning and to facilitate axial compression
- Chamfered edges and a smooth surface for soft tissue protection
- K-wire holes to assist with temporary plate fixation
- Plates are compatible with the screws and instruments of the APTUS Wrist Radius System 2.5

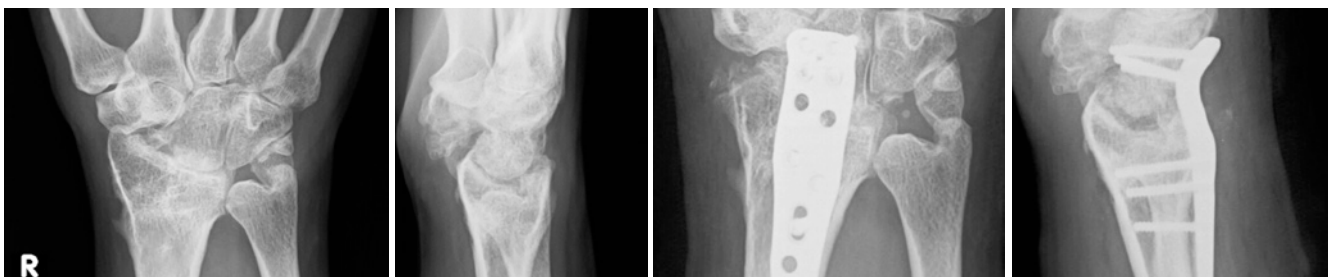


A-4760.07



A-4760.08

Scale 1:1



Painful osteoarthritis 6 years after proximal row carpectomy (PRC)

Postoperative X-rays of the fusion of radius and capitate using the Wrist Fusion plate with short bend

Clinical case published with the kind permission of: Radek Kebrle, Vysoke, Czechia

* Exception: oblong hole

2.5 TriLock Total Wrist Fusion Plates

Total wrist arthrodesis

Clinical Benefits

- Fusion of radiocarpal, midcarpal and carpometacarpal joint
- Plate with long bend, for example for medium to large wrists
- Plate with short bend, for example for small wrists or for arthrodesis following proximal row carpectomy
- Straight plate for fusion in slight flexion, for example in rheumatoid arthritis
- Offset screw arrangement reduces the risk of axial bone splitting in the metacarpal area
- Multiple screw holes for angular stable fixation of various carpal bones

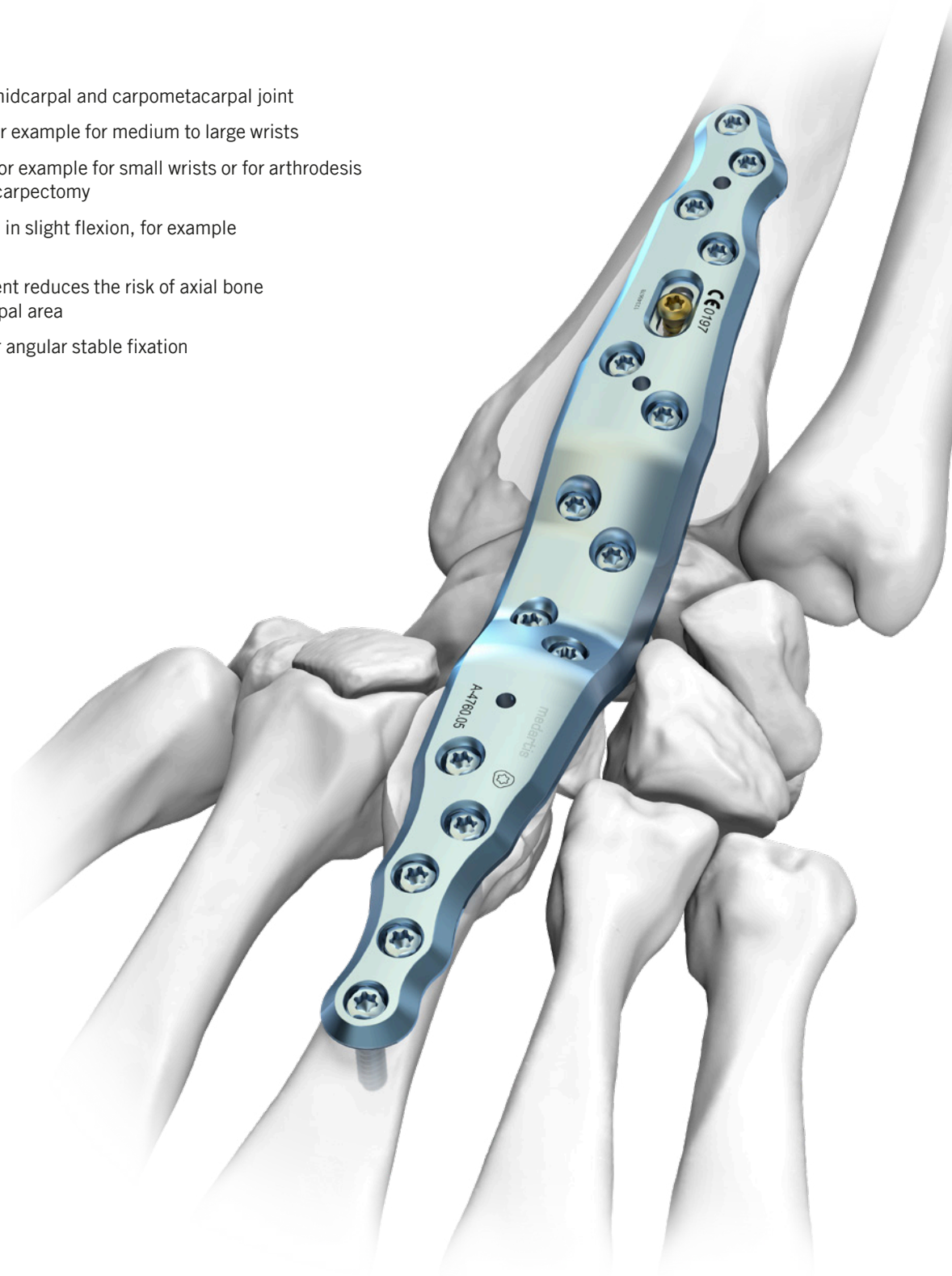
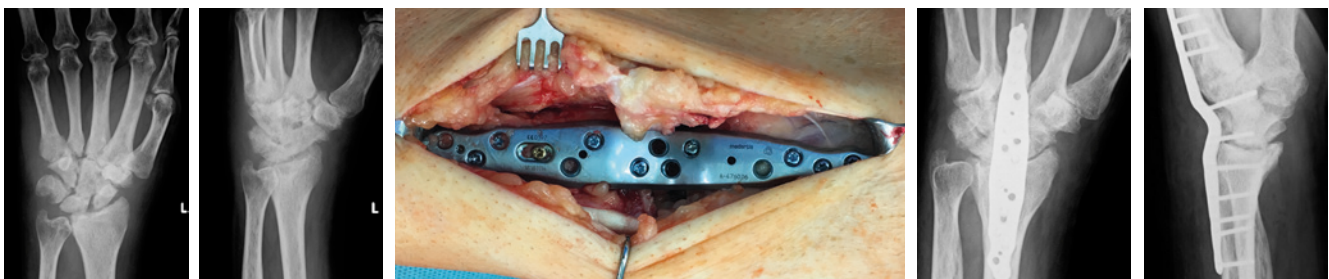
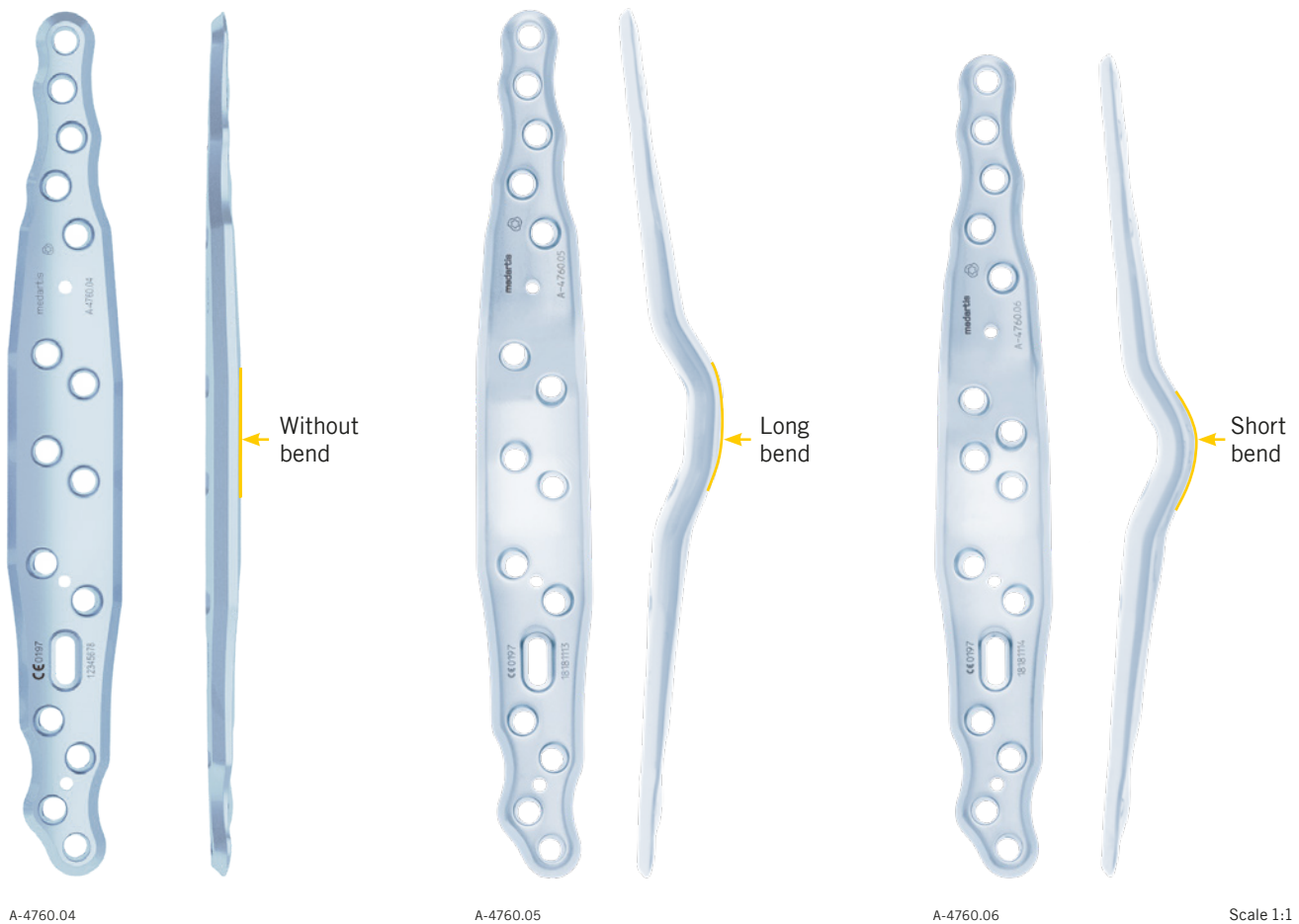


Plate Features

- TriLock – multidirectional angular stability of $\pm 15^\circ$ in all directions and in each screw hole*
- Minimal screw head protrusion – especially in the metacarpal area – thanks to internal locking contour
- Consistent screw diameter of 2.5 mm for intraoperative simplicity
- Oblong hole for variable plate positioning and to facilitate axial compression
- Chamfered edges and a smooth surface for soft tissue protection
- K-wire holes to assist with temporary plate fixation
- Plates are compatible with the screws and instruments of the APTUS Wrist Radius System 2.5



Destroyed wrist and ankylosis following synovitis

Intraoperative image of the plate position

Postoperative X-rays of the fusion using the Total Wrist Fusion plate with short bend

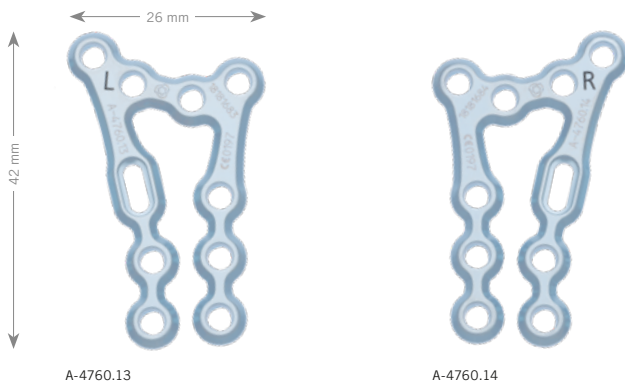
Clinical case published with the kind permission of: Radek Kebrle, Vysoke, Czechia

* Exception: oblong hole

Ordering Information

2.5 TriLock RSL Fusion Plates, Volar

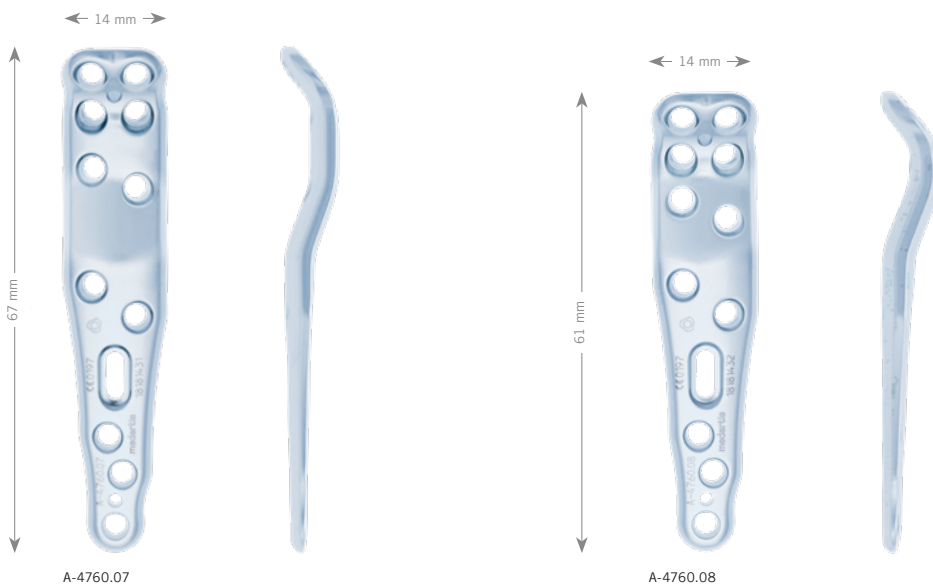
Material: Titanium (ASTM F67)
Plate thickness: 1.6 mm



Art. No.	STERILE	Description	Holes	Pieces/Pkg
A-4760.13	A-4760.13S	left	10	1
A-4760.14	A-4760.14S	right	10	1

2.5 TriLock Wrist Fusion Plates, Dorsal, Radiocarpitate

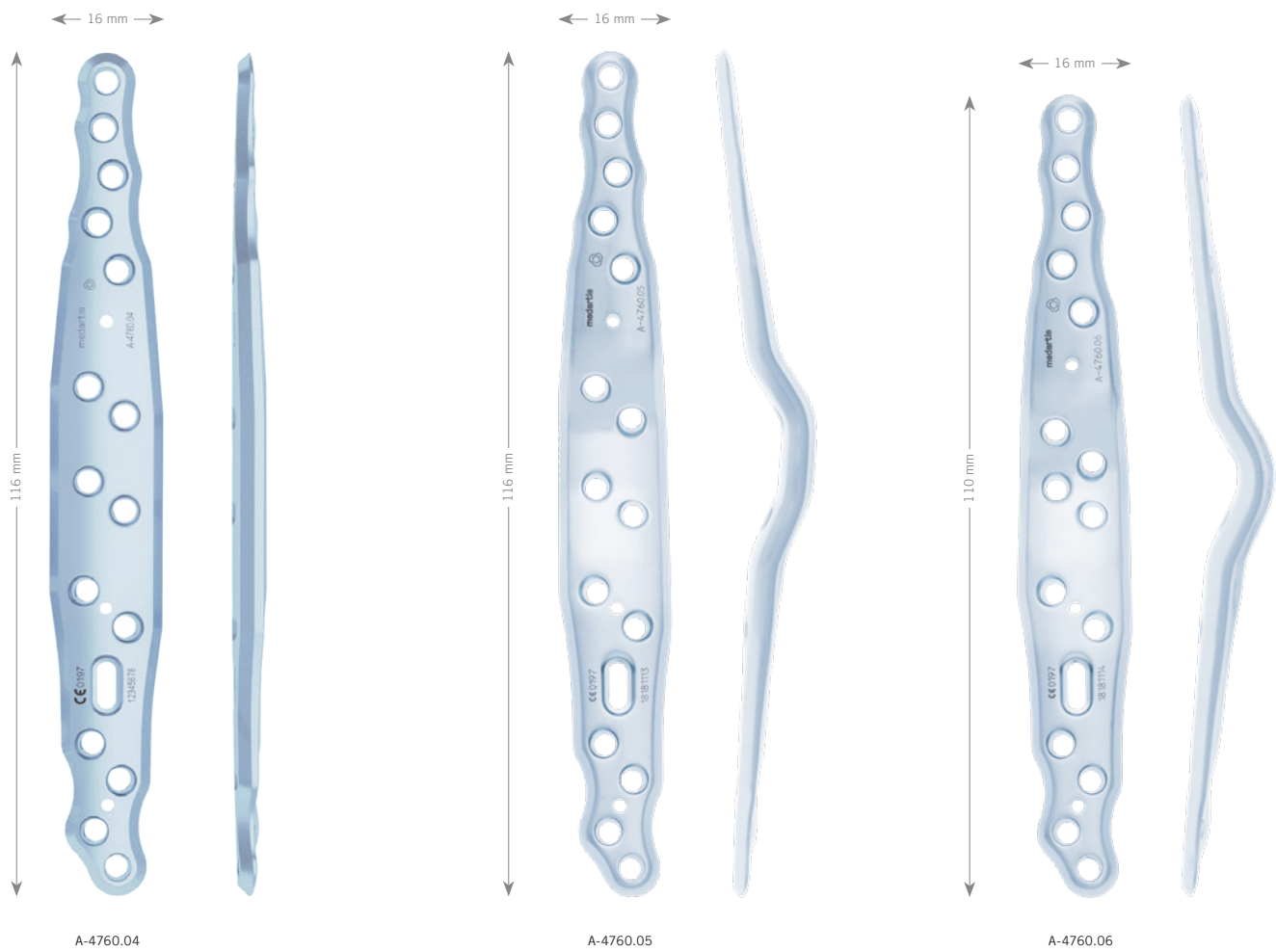
Material: Titanium (ASTM F67)
Plate thickness: 1.8–2.6 mm



Art. No.	STERILE	Description	Holes	Pieces/Pkg
A-4760.07	A-4760.07S	long bend	12	1
A-4760.08	A-4760.08S	short bend	12	1

2.5 TriLock Total Wrist Fusion Plates, Dorsal

Material: Titanium (ASTM F67)
Plate thickness: 1.8–2.6 mm



Art. No.	STERILE	Description	Holes	Pieces/Pkg
A-4760.04	A-4760.04S	straight	16	1
A-4760.05	A-4760.05S	long bend	16	1
A-4760.06	A-4760.06S	short bend	16	1

WRIST-14000001_v0 / © 2019-05, Medartis AG, Switzerland. All technical data subject to alteration.

MANUFACTURER & HEADQUARTERS

Medartis AG | Hochbergerstrasse 60E | 4057 Basel/Switzerland
P +41 61 633 34 34 | F +41 61 633 34 00 | www.medartis.com

SUBSIDIARIES

Australia | Austria | Brazil | France | Germany | Japan | Mexico | New Zealand | Poland | UK | USA

For detailed information regarding our subsidiaries and distributors, please visit www.medartis.com



Disclaimer: This information is intended to demonstrate the Medartis portfolio of medical devices. A surgeon must always rely on her or his own professional clinical judgement when deciding whether to use a particular product when treating a particular patient. Medartis is not giving any medical advice. The devices may not be available in all countries due to registration and/or medical practices. For further questions, please contact your Medartis representative (www.medartis.com). This information contains CE-marked products.
For US only: Federal law restricts this device to sale by or on the order of a physician.