

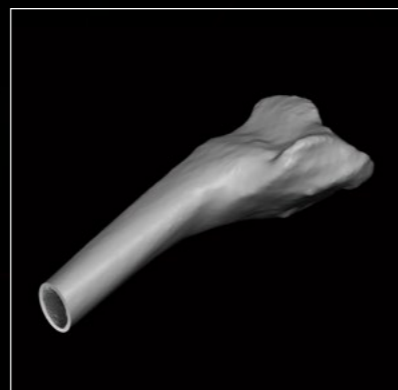
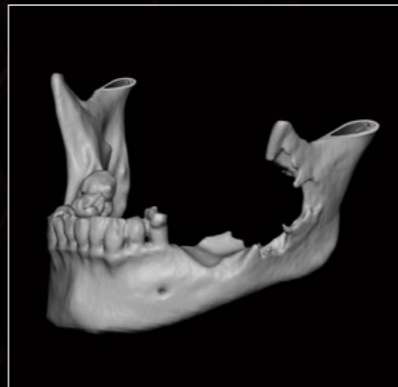
medartis

PRECISION IN FIXATION

CMX

Creating More Experience.

# INDICATIONS



## Patient-Matched Devices

Patient-matched devices are CE 0197/UKCA 0086-marked instruments and implants.\*  
These devices are personalized and are produced according to a fixed set of parameters based on the patient's CT dataset and a preoperative digital 3D planning.

If the fixed parameters can not be met, a solution can still be provided as a custom-made device.

\* Patient-matched implants are available for mandible reconstruction cases. Patient-matched instruments (guides and bone models) are available for all Medartis MODUS and APTUS plate indications.

# CMX SOLUTIONS



## Implant

For mandible reconstruction cases a CE 0197/UKCA 0086-marked personalized plate can be provided. For other indications within the Medartis MODUS and APTUS portfolio, standard implants can be used or custom-made implants can be requested.\*

## Bone Model

Pre- or postoperative bone models can be used for:

- preoperative model surgery
- intraoperative visualization
- as a transfer tool for the surgeon's clinical plan

Bone models are available for all established MODUS and APTUS plate indications.\*

## Drilling and Cutting Guide

Drilling and/or cutting guides can be used intra-operatively as tools for the surgeon to transfer the clinical plan. The guides are anatomically shaped and may include other optical references to allow a good placement. Drilling and cutting guides can be provided for all established MODUS and APTUS plate indications.\*

\* Please contact your local Medartis representative for information on the availability of these products and services in your area. The images shown are examples of specific APTUS or MODUS indications. Every solution will be different based on clinical indication and patient's anatomy.

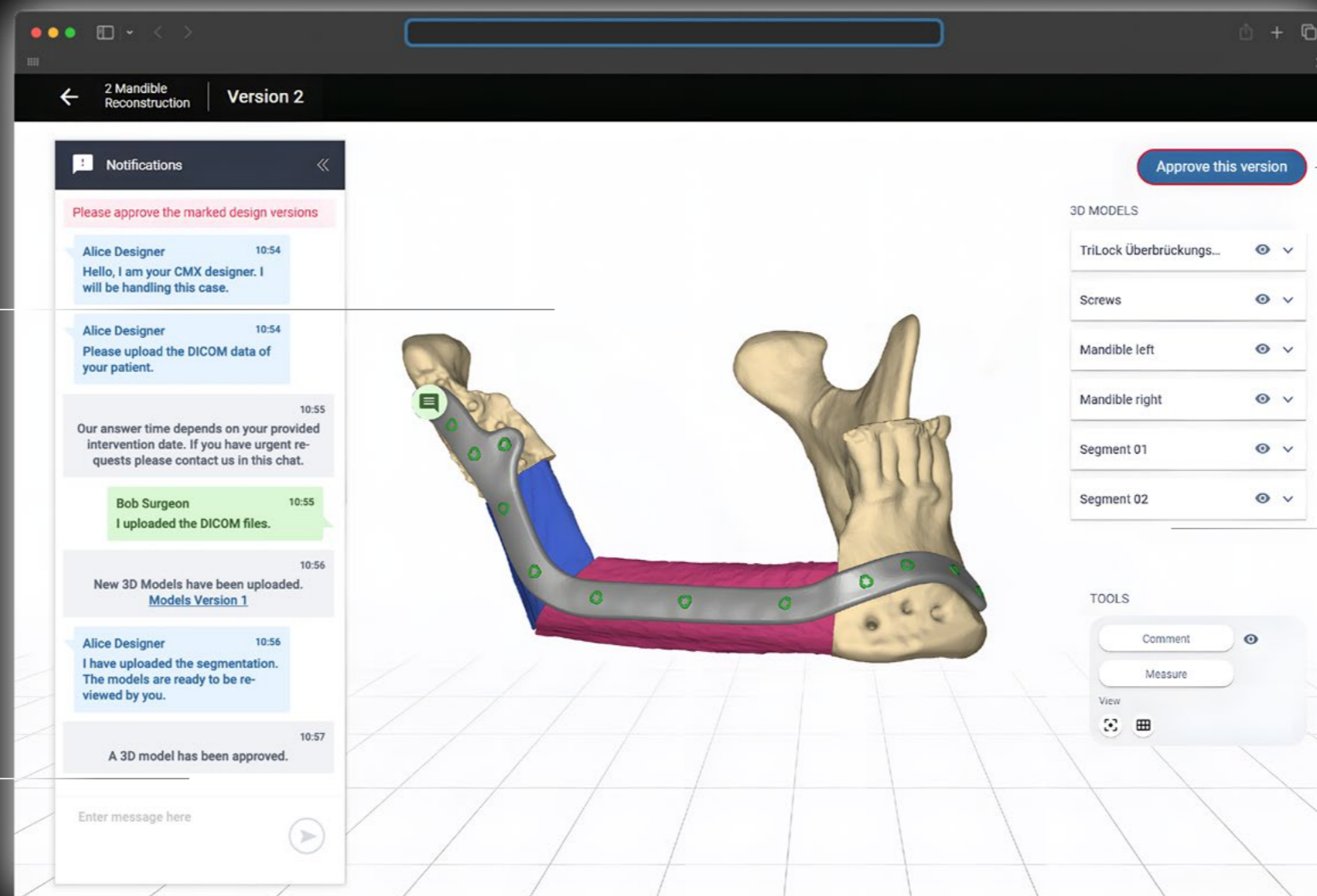
# CMX PORTAL – THE ALL-IN-ONE WEB SOLUTION

## CMX Portal 3D Viewer

The 3D Viewer allows the surgeon to analyze the 3D planning data in a sophisticated way. In the 3D Viewer, both the preoperative plan as well as preoperative situation can be viewed from all angles. Measurements and comments linked to specific anatomical landmarks facilitate clear communication with the CMX designer.

## CMX Portal Chat

The CMX Portal Chat enables the surgeon to communicate with the CMX designer at any time. Required action points are highlighted, and the entire case development process is documented in the chat.



## CMX Portal Action Indicator

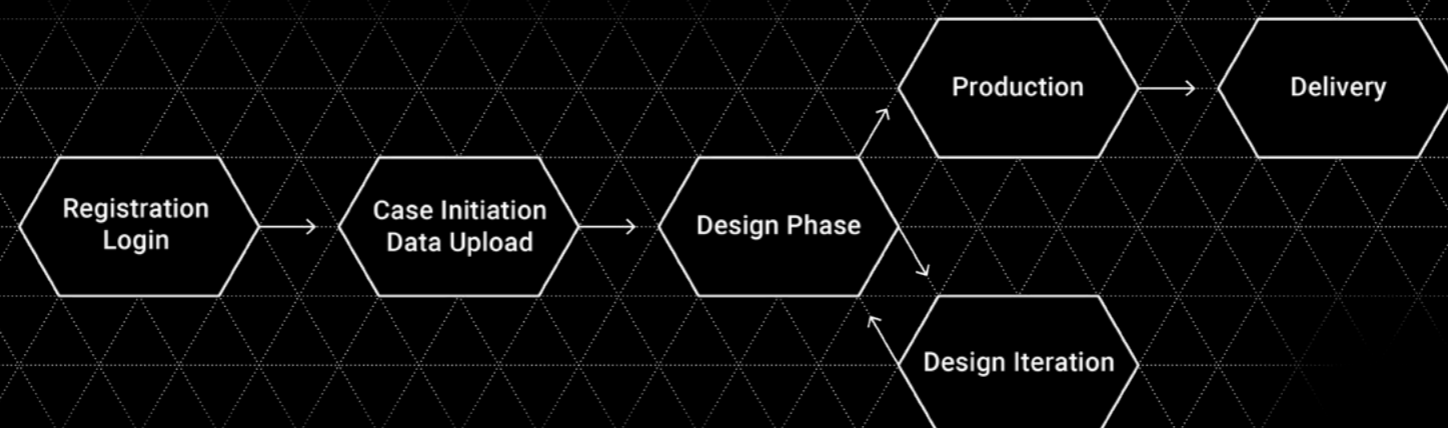
In the CMX Portal, a clear visual indicator shows when an action from the surgeon is required to proceed with case planning. This indicator is visible across different views within the CMX portal and is clearly highlighted in red.

## CMX Portal 3D Models

The 3D models overview lists all the 3D parts in the preoperative situation or the planned outcome model. Users can easily select different models to make them visible, semi-transparent or invisible.

## CMX Process

Streamlined process from case initiation to order delivery with full case-related documentation.



Learn more



# medartis

PRECISION IN FIXATION

R\_CMX-10000001\_v0 / 2025-01, Medartis AG, Switzerland. All technical data subject to alteration.

## MANUFACTURER & HEADQUARTERS

Medartis AG | Hochbergerstrasse 60E | 4057 Basel / Switzerland  
P +41 61 633 34 34 | F +41 61 633 34 00 | [www.medartis.com](http://www.medartis.com)

## SUBSIDIARIES

Australia | Austria | Brazil | France | Germany | Japan | Mexico | New Zealand | Poland | Spain | UK | USA

For detailed information regarding our subsidiaries and distributors, please visit [www.medartis.com](http://www.medartis.com)

CE 0197 UK  
CA  
0086

Disclaimer: This information is intended to demonstrate the Medartis portfolio of medical devices. A surgeon must always rely on her or his own professional clinical judgement when deciding whether to use a particular product when treating a particular patient. Medartis is not giving any medical advice. The devices may not be available in all countries due to registration and/or medical practices. For further questions, please contact your Medartis representative ([www.medartis.com](http://www.medartis.com)). This information contains products with CE and/or UKCA marking. All pictures shown are for illustration purposes only and may not be an exact representation of the product. For US only: Federal law restricts this device to sale by or on the order of a physician.

© Medartis 2025. Everything herein is protected by copyright, trademarks and other intellectual property rights, as applicable, owned by or licensed to Medartis or its affiliates unless otherwise indicated. It is forbidden to redistribute, duplicate or disclose anything herein, in whole or in part, without the prior written consent of Medartis.