


medartis®

PRECISION IN FIXATION

PRODUCT INFORMATION

Bone
Fixation Set
0.9/1.2, 1.5



MODUS®
Midface & Mandible

Bone Fixation Set 0.9/1.2, 1.5

For fixation and stabilization of bone transplants (bone grafts)

The Bone Fixation Set 0.9/1.2, 1.5 is used for fixation and stabilization of bone transplants (bone grafts) for alveolar ridge augmentation as well as for temporary stabilization and fixation of barrier membranes (Guided Bone Regeneration).

In addition to three standard set configurations, the user also has the possibility to individually adapt the set with either 0.9 mm cortical screws or 1.5 mm SpeedTip screws.

Indications

Reconstruction of bone degenerations of the alveolar ridge for mandibular atrophy

Clinical benefits

- Easy screw insertion due to excellent cutting properties
- Tapered core diameter close to the screws head for increased torsional and tensile strength
- Maximum soft tissue protection due to rounded screw head design without sharp edges

Clinical Case

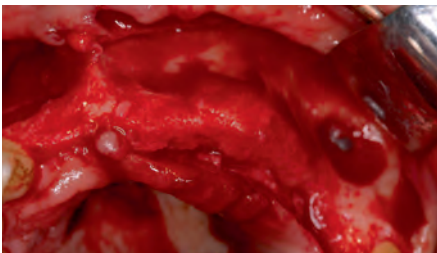


Figure 1:
Bone defects after paradontal decreases

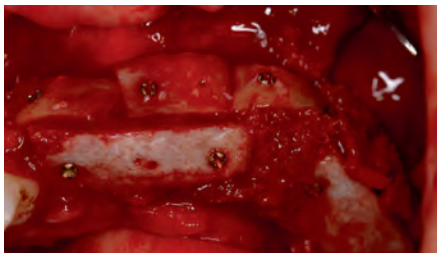


Figure 2:
3D reconstruction with bone blocks from the pelvis. Stable fixation with cortical screws 0.9/1.2 and/or 1.5



Figure 3:
State 3.5 months after bone reconstruction before implantation. No visible resorption near cortical screws

Clinical case presented with permission from:
Dr. Ralf Masur, Implantatzentrum Bad Wörishofen, Unterschleißheim, Germany

- Individual configuration and economic
- 3 different screw diameters
- Choice between HexaDrive and cross-drive
- Self-tapping and self-drilling screws

SCREW OPTIONS

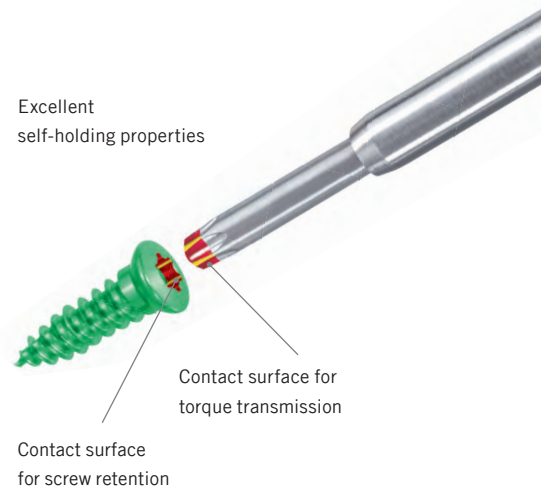
- Choice between HexaDrive and cross-drive screws
- 0.9/1.2/1.5 self-tapping cortical screws
- 1.5 SpeedTip screws, self-drilling
- Screw lengths from 2 mm to 16 mm



Self-tapping and self-drilling screws

SCREW FEATURES

- HexaDrive technology– the optimal self-holding mechanism between screw and screwdriver for increased torque transmission
- Outstanding self-tapping characteristics and easy screw insertion due to a precise and sharp thread
- SpeedTip technology for self-drilling screws:
 - Reduced risk of dislocation due to excellent grip
 - Effortless insertion: Only the polygonal tip pushes bone material aside – regardless of screw length
 - Excellent tactile feedback during insertion
- Screws can be inserted more rapidly due to a thread pitch which is optimized according to the length of the screw
- Tapered core diameter close to the screw head for increased torsional and tensile strength

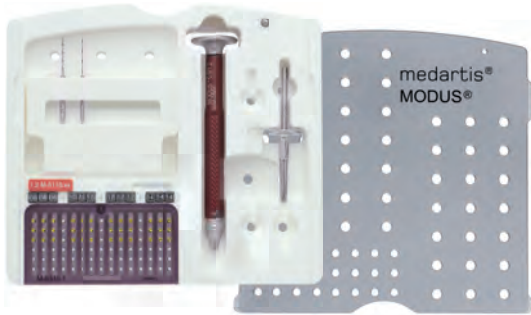


INDIVIDUAL CONFIGURATION

- 1 container for all set configurations
- 2 screw racks for 0.9/1.2 and 1.5 mm screws
- Sticker, small black for identification of screw lengths
- Sticker, large green/red for identification of respective screw types



Ordering Information



1.2 Bone Fixation Set, Cross-Drive (Complete)

Art. No. M-1001

1.2 Cortical Screws, Cross-Drive

Material: Titanium (ASTM F67)



Art. No.	Length	Piece/Pkg
M-5110.08	8 mm	5
M-5110.10	10 mm	5
M-5110.12	12 mm	5
M-5110.14	14 mm	5

For a package of 1 please add "1" at the end of the art. no., for example M-5110.08 /1

Screwdriver 0.9/1.2 (Complete)



Art. No.	Description	Piece/Pkg
M-2101	Cross-Drive with Tension Sleeve	1

Twist Drills for Screws Ø 1.2 mm



M-3421



M-3292

Art. No.	Ø	Stop	Length	Drill Shaft End	Piece/Pkg
M-3421	1.0	16 mm	37 mm	Dental	1
M-3292	1.25	16 mm	37 mm	Dental	1

Optional available:

0.9 Cortical Screws, Cross-Drive

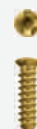
Material: Titanium (ASTM F67)



Art. No.	Length	Piece/Pkg
M-5100.05	5 mm	5
M-5100.06	6 mm	5
M-5100.07	7 mm	5
M-5100.08	8 mm	5
M-5100.09	9 mm	5
M-5100.10	10 mm	5

1.2 Cortical Screws, Cross-Drive

Material: Titanium (ASTM F67)



Art. No.	Length	Piece/Pkg
M-5110.05	5 mm	5
M-5110.06	6 mm	5

Twist Drills for Screws Ø 0.9 mm



M-3121



M-3411

Art. No.	Ø	Stop	Length	Drill Shaft End	Piece/Pkg
M-3121	0.75	8 mm	37 mm	Dental	1
M-3411	0.75	12 mm	37 mm	Dental	1

Twist Drill for Screws Ø 1.2 mm



Art. No.	Ø	Stop	Length	Drill Shaft End	Piece/Pkg
M-3351	1.0	8 mm	37 mm	Dental	1



1.5 Bone Fixation Set, Cross-Drive (Complete)

Art. No. M-1002

Optional available:

1.5 Cortical Screws, Cross-Drive

Material: Titanium (ASTM F67)

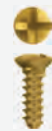


Art. No.	Length	Piece/Pkg
M-5120.08	8 mm	5
M-5120.10	10 mm	5
M-5120.12	12 mm	5
M-5120.14	14 mm	5

For a package of 1 please add "/1" at the end of the art. no., for example M-5120.08 /1

1.5 Cortical Screws, Cross-Drive

Material: Titanium (ASTM F67)



Art. No.	Length	Piece/Pkg
M-5120.05	5 mm	5
M-5120.06	6 mm	5
M-5120.07	7 mm	5
M-5120.09	9 mm	5
M-5120.16	16 mm	5

Screwdriver 1.5 (Complete)



Art. No.	Description	Piece/Pkg
M-2102	Cross-Drive with Tension Sleeve	1

Twist Drills for Screws Ø 1.5 mm



M-3292



M-3302

Art. No.	Ø	Stop	Length	Drill Shaft End	Piece/Pkg
M-3292	1.25	16 mm	37 mm	Dental	1
M-3302	1.5	20 mm	37 mm	Dental	1

1.5 SpeedTip Screws, Cross-Drive

Material: Titanium (ASTM F136)



Art. No.	Length	Piece/Pkg
M-5121.05	5 mm	5
M-5121.06	6 mm	5
M-5121.07	7 mm	5
M-5121.09	9 mm	5

Screwdriver Blade 1.5

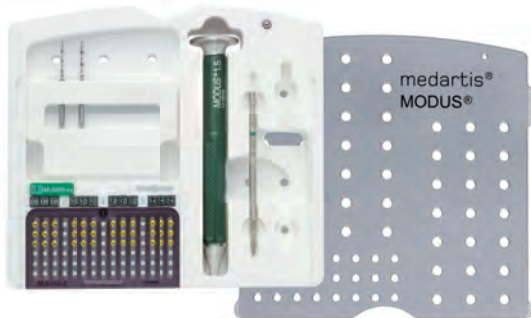


Art. No.	Description	Piece/Pkg
M-2522	self-holding	1

Twist Drill for Screws Ø 1.5 mm



Art. No.	Ø	Stop	Length	Drill Shaft End	Piece/Pkg
M-3222	1.2	9 mm	37 mm	Dental	1



1.5 Bone Fixation Set, HexaDrive (Complete)

Art. No. M-1012

1.5 Cortical Screws, HexaDrive 4

Material: Titanium (ASTM F136)



Art. No.	Length	Piece/Pkg
M-5220.08	8 mm	5
M-5220.10	10 mm	5
M-5220.12	12 mm	5
M-5220.14	14 mm	5

For a package of 1 please add "/1" at the end of the art. no., for example M-5220.08 /1

Screwdriver 1.5 (Complete)



Art. No.	Description	Piece/Pkg
M-2112	HexaDrive	1

Twist Drills for Screws Ø 1.5 mm



M-3292



M-3302

Art. No.	Ø	Stop	Length	Drill Shaft End	Piece/Pkg
M-3292	1.25	16 mm	37 mm	Dental	1
M-3302	1.5	20 mm	37 mm	Dental	1

Optional available:

1.5 Cortical Screws, HexaDrive 4

Material: Titanium (ASTM F136)



Art. No.	Length	Piece/Pkg
M-5220.05	5 mm	5
M-5220.06	6 mm	5
M-5220.07	7 mm	5
M-5220.09	9 mm	5
M-5220.11	11 mm	5
M-5220.13	13 mm	5
M-5220.16	16 mm	5

1.5 SpeedTip Screws, HexaDrive 4

Material: Titanium (ASTM F136)

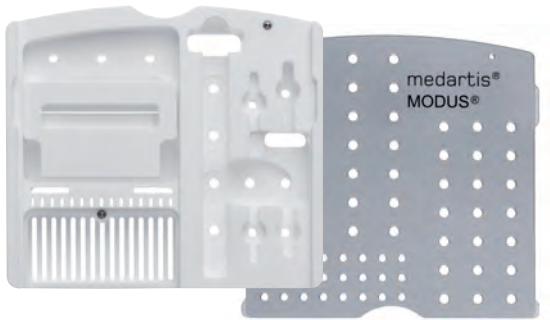


Art. No.	Length	Piece/Pkg
M-5223.05	5 mm	5
M-5223.06	6 mm	5
M-5223.07	7 mm	5
M-5223.09	9 mm	5

Twist Drill for Screws Ø 1.5 mm



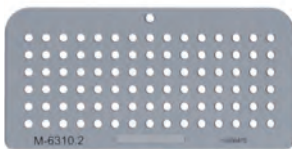
Art. No.	Ø	Stop	Length	Drill Shaft End	Piece/Pkg
M-3222	1.2	9 mm	37 mm	Dental	1



Implant Container Bone Fixation 1.2/1.5

Art. No. M-6310 (empty)

Screw Racks for Bone Fixation Set (Empty)



Art. No.	System	Piece/Pkg
M-6310.1	0.9/1.2	1
M-6310.2	1.5	1

Stickers, Large



Art. No.	Description	Color	Piece/Pkg
M-6571.01	M-5110.xx	red	1
M-6571.02	M-5100.xx	red	1
M-6572.12	M-5120.xx	green	1
M-6572.14	M-5220.xx	green	1
M-6572.18	M-5121.xx	green	1
M-6572.19	M-5223.xx	green	1

Stickers, Small



Art. No.	Description	Color	Piece/Pkg
A-6095.05	5	black	1
A-6095.06	6	black	1
A-6095.07	7	black	1
A-6095.08	8	black	1
A-6095.09	9	black	1
A-6095.10	10	black	1
A-6095.11	11	black	1
A-6095.12	12	black	1
A-6095.13	13	black	1
A-6095.14	14	black	1
A-6095.16	16	black	1

MANDIBLE-09000001_v1 / © 05.2014, Medartis AG, Switzerland. All technical data subject to alteration.

HEADQUARTERS

Medartis AG | Hochbergerstrasse 60E | 4057 Basel/Switzerland
P +41 61 633 34 34 | F +41 61 633 34 00 | www.medartis.com

SUBSIDIARIES

Australia | Austria | France | Germany | Mexico | New Zealand | Poland | UK | USA

For detailed information regarding our subsidiaries and distributors, please visit www.medartis.com